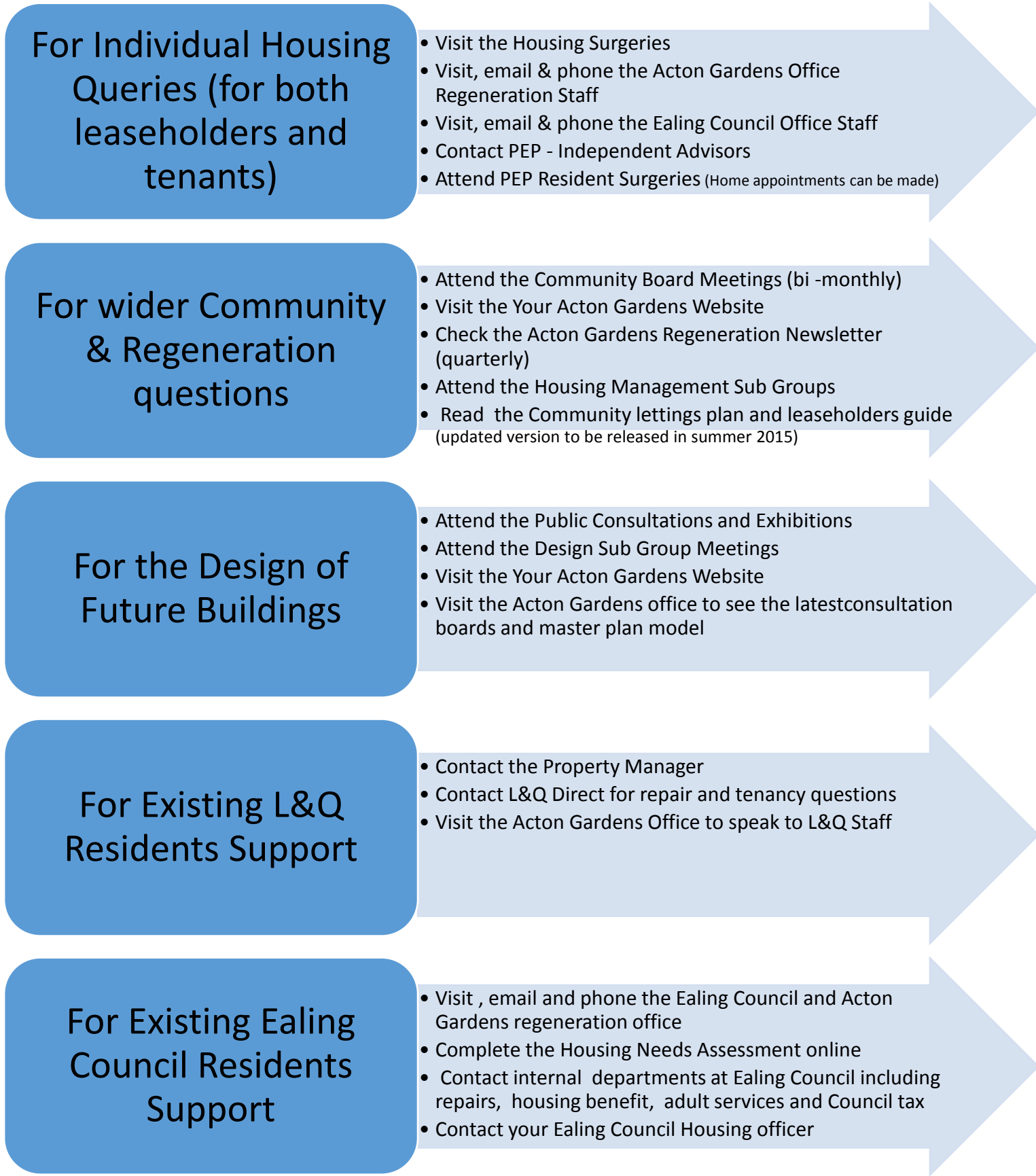


# SOUTH ACTON REGENERATION - WHO TO CONTACT?

## ORGANISATIONS CONTACT DETAILS



**For Individual Housing Queries (for both leaseholders and tenants)**

- Visit the Housing Surgeries
- Visit, email & phone the Acton Gardens Office Regeneration Staff
- Visit, email & phone the Ealing Council Office Staff
- Contact PEP - Independent Advisors
- Attend PEP Resident Surgeries (Home appointments can be made)

**For wider Community & Regeneration questions**

- Attend the Community Board Meetings (bi-monthly)
- Visit the Your Acton Gardens Website
- Check the Acton Gardens Regeneration Newsletter (quarterly)
- Attend the Housing Management Sub Groups
- Read the Community lettings plan and leaseholders guide (updated version to be released in summer 2015)

**For the Design of Future Buildings**

- Attend the Public Consultations and Exhibitions
- Attend the Design Sub Group Meetings
- Visit the Your Acton Gardens Website
- Visit the Acton Gardens office to see the latest consultation boards and master plan model

**For Existing L&Q Residents Support**

- Contact the Property Manager
- Contact L&Q Direct for repair and tenancy questions
- Visit the Acton Gardens Office to speak to L&Q Staff

**For Existing Ealing Council Residents Support**

- Visit, email and phone the Ealing Council and Acton Gardens regeneration office
- Complete the Housing Needs Assessment online
- Contact internal departments at Ealing Council including repairs, housing benefit, adult services and Council tax
- Contact your Ealing Council Housing officer

**Acton Gardens**  
For information about the regeneration including the masterplan, all future phases and development

- Bianca Goulden - Senior Regeneration Manager (0844 406 9000 ext: 2876 [bgoulden@lqgroup.org.uk](mailto:bgoulden@lqgroup.org.uk))
- Toni Hodson - Regeneration Coordinator (0844 406 9000 ext: 6421 [thodson@lqgroup.org.uk](mailto:thodson@lqgroup.org.uk))
- [www.yoursouthacton.co.uk](http://www.yoursouthacton.co.uk)
- Acton Gardens Office, 112-114 Hardy Court, W3 8DD

**London Borough of Ealing Council**  
For decanting queries, buying out leaseholders, securing empty homes, compensation payments and determining your future housing needs

- David Colley - Regeneration Manager & Policy Lead (0208 825 5833 [colleyd@ealing.gov.uk](mailto:colleyd@ealing.gov.uk))
- Leon Joseph - Regeneration Officer (0208 8896 9372 [josephle@ealing.gov.uk](mailto:josephle@ealing.gov.uk))
- Amar Sokhi - Regeneration Officer (0208 825 9791 [sokhia@ealing.gov.uk](mailto:sokhia@ealing.gov.uk))
- Ealing Regeneration Office, 108 Bollo Bridge Road, W3 8DD

**Countryside Properties**  
For development and building construction queries

- Mike Wolliscroft - Director ([mike.woolliscroft@cpplc.com](mailto:mike.woolliscroft@cpplc.com))
- Mark Ludlow - Associate Director ([mark.ludlow@cpplc.com](mailto:mark.ludlow@cpplc.com))
- Roz Williams - Development Manager (01277 697 056 [roz.williams@cpplc.com](mailto:roz.williams@cpplc.com))

**Priority Estates Project (PEP)**  
For free independent advice on the regeneration project

- Keith Mann - Independent Advisor (0800 374 4864 or [www.pep.org.uk](http://www.pep.org.uk))
- Keith holds monthly housing surgeries on the first Tuesday of each month from 2pm to 6pm at the Regeneration Office, 108 Bollo Bridge Road, W3 8DD

**L&Q**  
The Housing Association responsible for all future buildings repairs, maintenance and upkeep once completed and residents have moved in.

- L&Q Direct: 0800 015 6536 / 0844 406 9000 or [www.lqgroup.org.uk](http://www.lqgroup.org.uk)
- Shakira Henry - Property Manager (0844 406 9000 ext: 6404 [shenry@lqgroup.org.uk](mailto:shenry@lqgroup.org.uk))
- Acton Garden Office - 112-114 Hardy Court, Bollo Bridge Road, W3 8DD

**Community Board**  
The board is responsible for decision making processes for the regeneration programme, spending the community chest

- The Community Board consists of 12 resident members who are all current tenants/leaseholders of the South Acton Estate. The board is also made up by Acton Gardens, ward councillors, and the London Borough of Ealing. Meetings are held bi monthly, please check on [www.yoursouthacton.co.uk](http://www.yoursouthacton.co.uk) for further details.

**Sub Design Group Meeting –**  
The group was established to look at and advise on how Acton Gardens consult with residents in relation to the masterplan and design.

- Their work includes consultations and recommendations on the design and layout of future phases.
- For future meeting please check on [www.yoursouthacton.co.uk](http://www.yoursouthacton.co.uk) for further details.

**Housing Management Sub Group**  
The group looks at key issues such as rents, service charges, tenants choices to customise new homes and made recommendation for naming the new blocks on the first phase .

- The group meet and discuss the array of key issues affecting the residents of South Acton.
- Meetings are held quarterly, please check on [www.yoursouthacton.co.uk](http://www.yoursouthacton.co.uk) for further details.